

**KBT****2400-2500/5150-5900MHz Directional Antenna****KDP2-2458CT****Application**

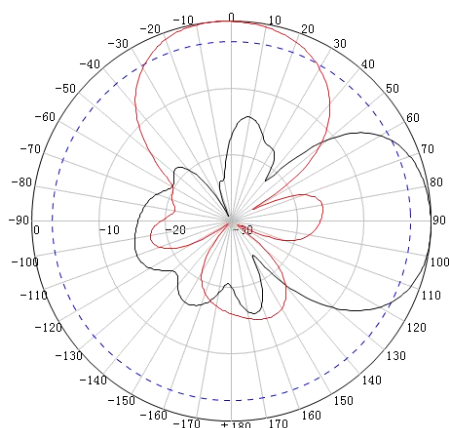
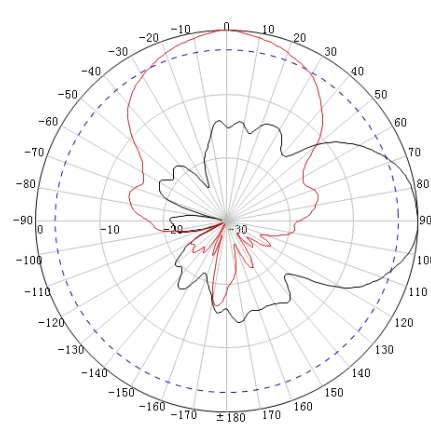
Used in 2.4GHz/5GHz system, 2.4GHz/5GHz One port each

**Electrical specifications**

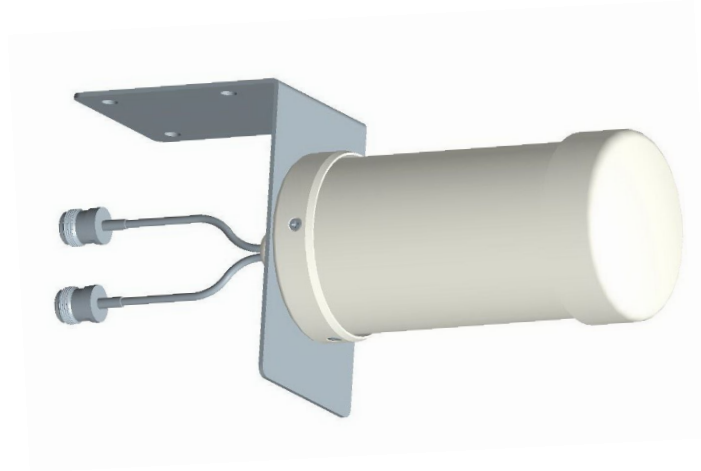
Frequency range (MHz)	2400-2500	5150-5900
Polarization	Vertical	Vertical
Gain (dBi)	9-12	9-12
Nominal Horizontal beam width (°)	55	50
Nominal Vertical beam width (°)	50	45
Front-to-back ratio (dB)	≥12	≥15
Impedance (Ω)	50	
VSWR	≤2.0	
Maximum power (W)	50	

**Mechanical specifications**

Connector	2*N Female
Connector position	Bottom
Exposed cable(mm)	110(±5)
Antenna size (mm)	φ75*160
Packing size (mm)	Multiple package, 295*105*90(±10) Minimum size
Weight (kg)	Antenna 0.35KG, Bracket 0.45KG
Radome material	UPVC
Radome color	White
Operating temperature (°C)	-40-+60
Rated wind velocity (m/s)	36.9
Suitable pole diameter (mm)	φ30-50
Mounting kit	JM-M8

**2.4G Typical Pattern****5G Typical Pattern**

## Product Picture



## Installation Sketch

